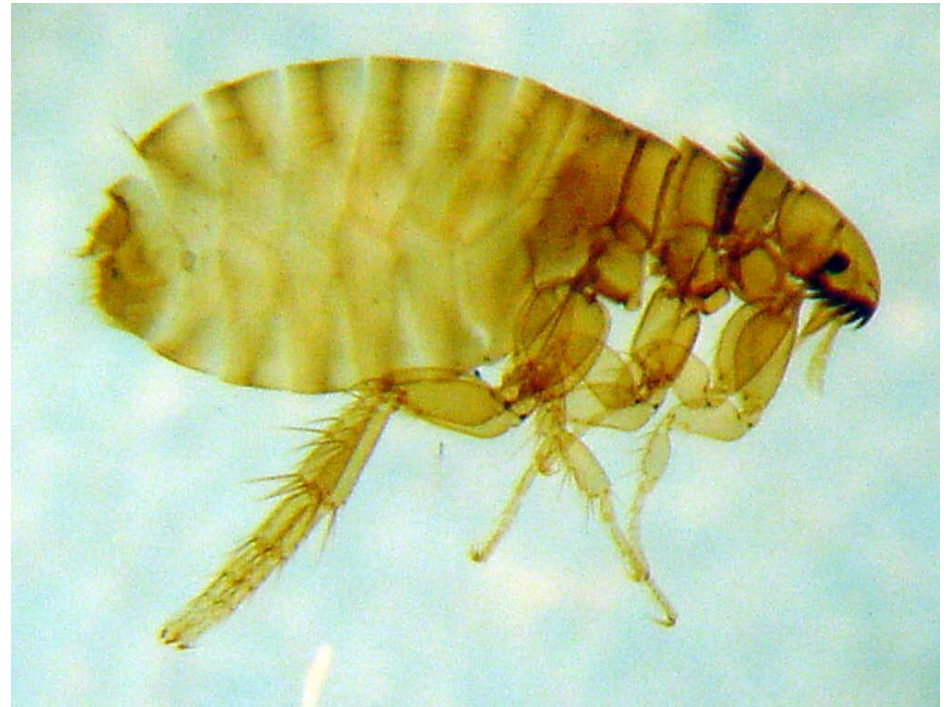


*Ctenocephalides felis*; male (left), female (right).

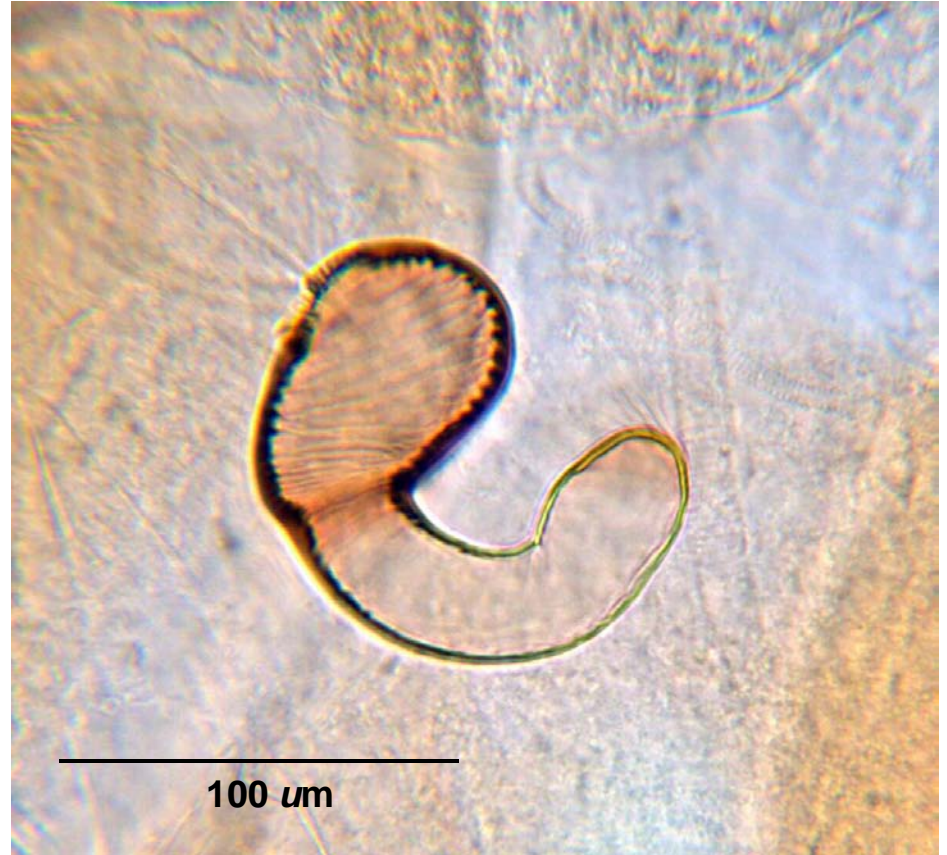


*C. felis*; male genitalia.





*C. felis*; female, spermatheca.



*C. felis* head; male (left), female (right). Note that head is relatively elongate compared to *C. canis*, and the anterior-most pair of genal teeth (arrows) are nearly same length as the next pair. Also, both genal and pronotal ctenidia present.





*C. felis* mouth parts. Legend:  
m, maxilla; md, mandibles;  
mp, maxillary palps.

